



Einfach.
Mehr.
Sicherheit.



CASE STUDY

INTEGRATED FIRE PROTECTION IN SENSITIVE AREAS OF HOSPITALS

HOSPITALS RELY ON AMFE FOR PROTECTION

Fire protection is of crucial importance - especially in sensitive areas such as escape and rescue routes, where the requirements are particularly high. In hospitals in particular, where the protection of patients and staff is a top priority, every possible risk must be minimized. Hospitals are therefore increasingly relying on innovative safety measures such as the installation of automatic mini fire extinguishing unit (AMFE) in drinks and snack vending machines.

Together with our partner Multicomsystem OHG, a total of seven mini fire extinguishing units were integrated into the vending machines of a Hamburg hospital. The installation of this life-saving technology, which can be carried out easily and efficiently both as a retrofit kit and in new equipment, also impressed the technicians on site. With this measure, the Hamburg hospital is underlining its commitment to the highest safety standards and demonstrating how innovative solutions can further improve fire protection to ensure a safe environment for everyone.

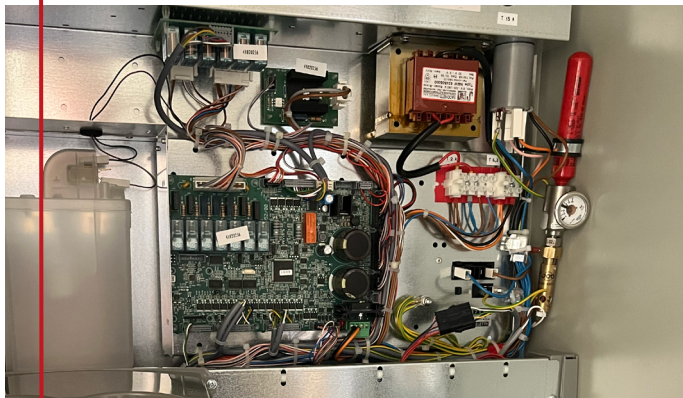
Simply. More. Safety.

”

The installation of **AMFE mini fire extinguishing unit** in vending machines increases safety and facilitates the approval for sensitive areas.



Dirk Goßen,
CEO Multicomsystem OHG



The S-AMFE installed in the vending machine



MULTICOMSYSTEM

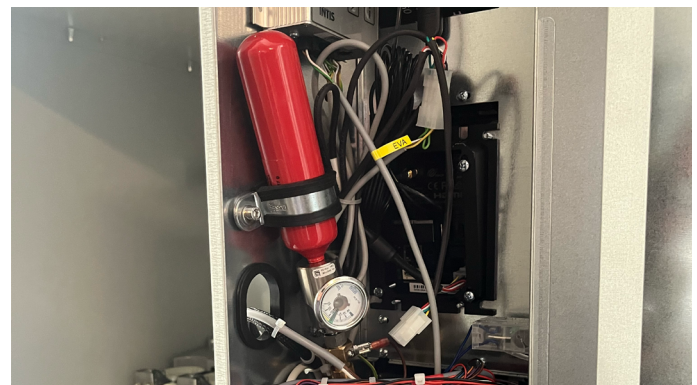
thinking out of the box



PROJECT SUMMARY:

- Country: Germany
- Partner: Multicomsystem OHG
- End customer: Selecta/Hamburg hospital
- Segment: Sensitive areas
- Solution: 7 S-AMFE n 79°C

The advantages of the AMFE are unmistakable. It detects the fire as soon as it starts, extinguishes it quickly and – above all – leaves no residue. Maintenance is possible with minimal effort thanks to the pressure gauge. In the event of a technical defect and fire inside the snack vending machine, the event is immediately reported to the building services or fire department via a connection to the fire alarm control panel, in addition to direct automatic extinguishing on site.



For questions about possible applications or technical details about the AMFE please feel free to contact Nico Kühn. (Nico.Kuehn@job-group.com).

VdS certified AMFE



JOB GmbH